



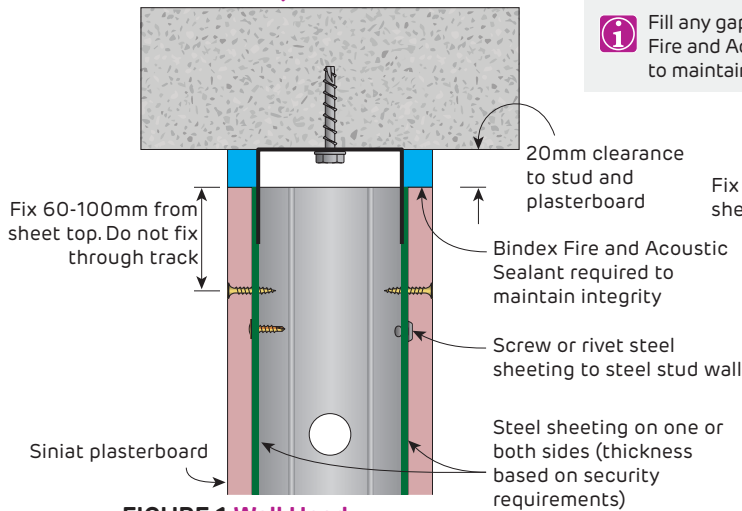
## 3.8 Security Walls

Security wall is an upgrade solution to improve security for any wall system. Applications for security wall can include common walls in multi-residential apartments and hotels, partitioning in shopping centres and retail outlets such as pharmacies.

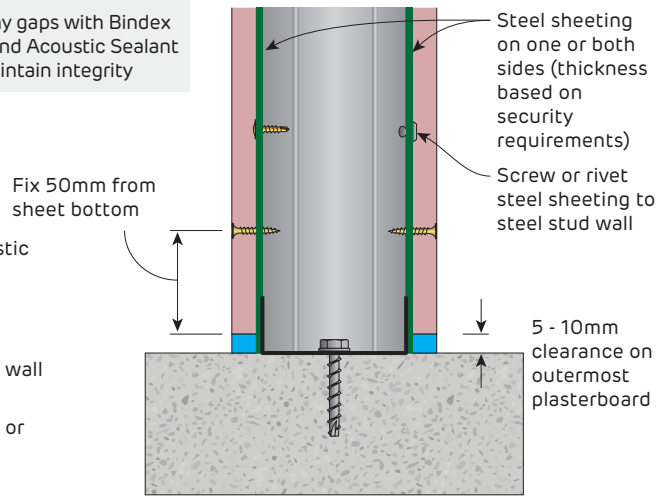
The system uses a sheet metal or expanded mesh barrier that is installed as part of the framing construction. The construction is cost-effective as it allows simple and quick assembly. The security wall upgrade may be applied to any Siniat single, staggered or double stud wall system without reducing fire and acoustic performance.



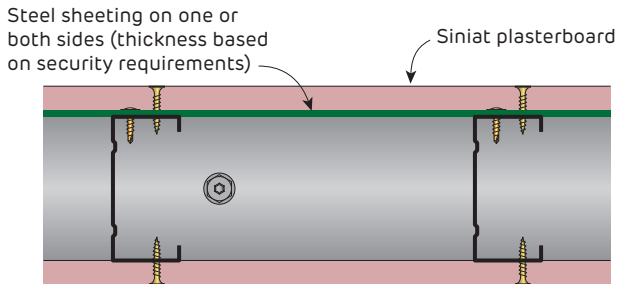
**Fire Rated and Non-Fire Rated  
Details for Security Walls**



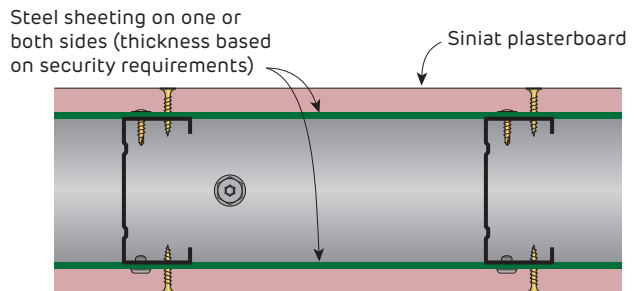
**FIGURE 1 Wall Head**  
Steel sheeting between stud and plasterboard Section



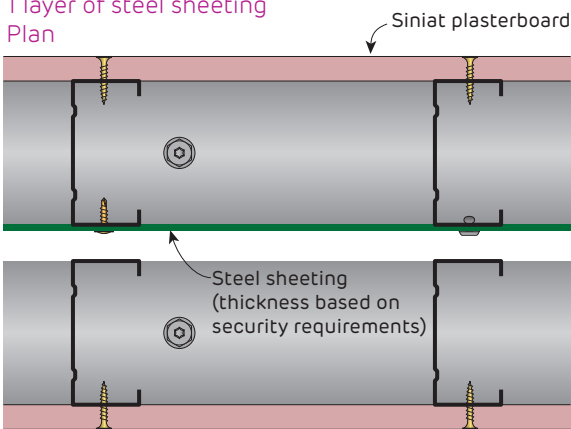
**FIGURE 2 Wall Base**  
Steel sheeting between stud and plasterboard Section



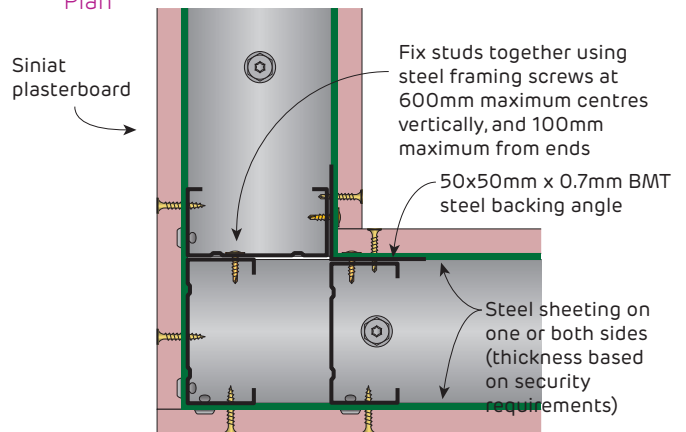
**FIGURE 3 Single Stud Wall**  
1 layer of steel sheeting Plan



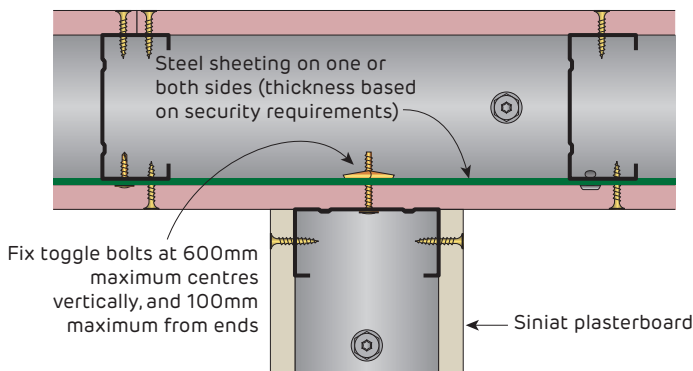
**FIGURE 4 Single Stud Wall**  
2 layers of steel sheeting Plan



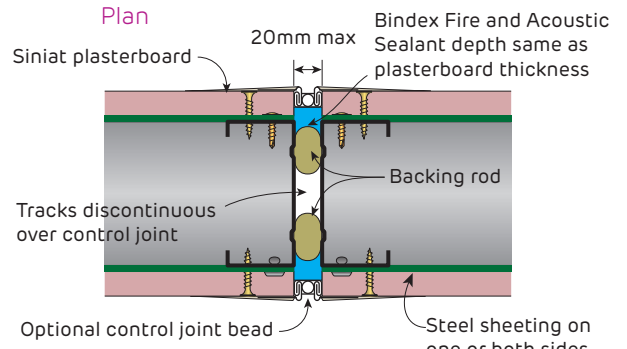
**FIGURE 5 Double Stud Wall**  
1 layer of steel sheeting between stud framing Plan



**FIGURE 6 90° Corner**  
2 layers of steel sheeting Plan



**FIGURE 7 Intersecting Wall**  
1 layer of steel sheeting Plan



**FIGURE 8 Control Joint**  
2 layers of steel sheeting Plan