



## creason

### perforated plasterboard



**creason** is part of Siniat's range of acoustic plasterboard. **creason** offers not only great acoustic performance with beautiful aesthetics, but now also offers air cleaning properties with inbuilt CAPT'AIR technology.

The acoustic performance of **creason** is achieved through a combination of sound diffusion, whereby reflected sound is spread out and through sound absorption, whereby sound travels through the perforation holes and acoustic fleece backing. The result is a high quality sound experience with excellent speech intelligibility. Additional optional insulation improves the sound absorption.

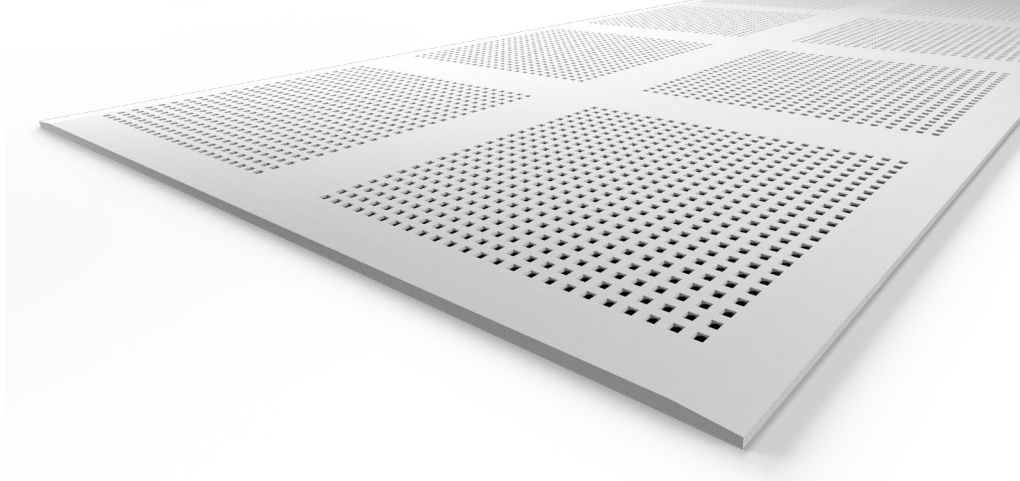
The **creason** range is installed like regular plasterboard.

### key benefits

- Excellent broadband sound diffusion and absorption to improve the acoustics in large open areas
- Two tapered edges and high quality precision perforations deliver superior aesthetic internal lining finishes
- Unique built-in air purifying active CAPT'AIR® technology to improve indoor air quality

### application

It is ideal for use in a range of internal applications where controlling the sound reverberation time is required such as offices, shopping centres, airports, schools, hospitals, conference halls, lecture theatres and libraries. **creason** can also be installed in residential ceilings to provide noise absorption in open plan living areas and home theatres. If **creason** is to be used on walls, we recommend installing above trafficable areas.



## product information

|                        | thickness(mm)   | width (mm) | length (mm) | weight* (kg/m <sup>2</sup> ) |
|------------------------|---|------------|-------------|------------------------------|
| sheet size             | 12.5  | 1200       | 2400        | 10                           |
| standard patterns      | Round R12/25 No.8<br>Cube C12/25 No.8   |            |             |                              |
| fire hazard properties | Group 1 with an Average Specific Extinction Area <250 m <sup>2</sup> /kg determined in accordance with AS 5637.1 as required by NCC S7C4 [2019: C1.10 Clause 4] |            |             |                              |
| hazards identification | Non-hazardous according to WHS Regulations  |            |             |                              |

\*Weights indicated are nominal. Minimum order quantities and lead times may apply.

## performance

### Sound Absorption

Excellent broadband sound absorption and diffusion to optimise the reverberation time and improve the overall acoustic environment.

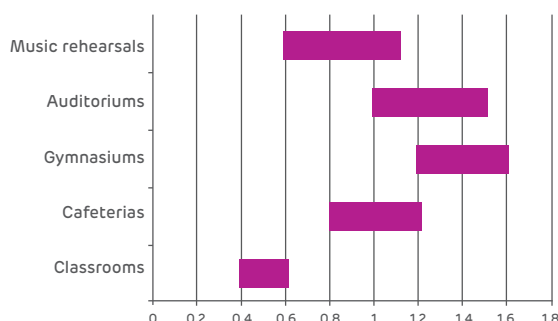
### Air Purifying


CAPT'AIR® technology is added to actively capture formaldehyde, improving the air quality inside buildings.

### Decorative

Two styles which can easily be installed, interspersed with standard plasterboard.

### Suitable Reverberation Times



 Use the Siniat Reverberation time calculator to assist in determining how much of the ceiling and or wall area should be covered. Alternatively involve an acoustic consultant, especially for very high ceilings and unusually shaped rooms such as those with domed or sloping ceilings.

### Siniat Reverberation Time Calculator



Use Siniat's Reverberation Time Calculator by using your phone's camera on the QR code.

| design  | perforation pattern | perforation ratio (%) | absorption ( $\alpha$ w/NRC) | board dimensions |             | edge type       |
|---|---------------------|-----------------------|------------------------------|------------------|-------------|-----------------|
|   |                     |                       |                              | width (mm)       | length (mm) | 2 sides tapered |
| Matrix collection - standard perforation patterns |                     |                       |                              |                  |             |                 |
| round   | R12/25 No.8         | 10.2                  | 0.5 - 0.6                    | 1200             | 2400        | •               |
| cube  | C12/25 No.8         | 16.1                  | 0.6 - 0.8                    |                  |             | •               |

## installation

**creason** must be installed using fasteners only for all wall and ceiling systems. For all plasterboard joints use **siniat paper tape** and apply two coats of **mastabase** or **mastalongset**, followed by a final coat of **mastaglide** or **mastalite** finishing compound.

Care should be taken during joint-setting to avoid blocking of perforations.  
Refer to the Blueprint for complete installation instructions.

## painting

Only use roller application for painting **creason**. Roller application applies a uniform texture over the entire surface and ensures the paint does not contact the protective mat fixed to the back of the plasterboard. Spray application of paint is not permitted.



Quality  
ISO 9001  
SAI GLOBAL

All Siniat products have been developed to meet the specific needs of the Australian market. Products manufactured in Australia comply with quality systems certified as complying with AS/NZS ISO 9001:2008 and meet the requirements of AS/NZS 2588, Gypsum Plasterboard.



The following Siniat products have been independently certified by Global GreenTag to GreenRate Level A: **mastashield**, **fireshield**, **fireshield h**, **soundshield**, **watershield**, **spanshield**, **multishield**, **curveshield**, **opal**, **trurock** and **trurock HD**. Compliance certificates are available on [siniat.com.au](http://siniat.com.au).



All Siniat plasterboard and metal products are available on the Siniat Carbon Neutral Opt-In program to help you meet your sustainability goals. Visit [siniat.com.au](http://siniat.com.au) to find out more.

#### Disclaimer

Products manufactured and systems designed by Etex Australia Pty Ltd and branded Siniat, are produced in accordance with the Building Code of Australia and relevant Australian Standards. Information in this document is to be used as a guide only and is subject to project approval as many aspects of construction are not comprehensively covered. It is also the responsibility of the project to determine if Siniat's products and systems are suitable for the intended application. Etex Australia Pty Ltd will not be held responsible for any claims resulting from the installation of its products or other associated products not in accordance with the recommendations of the manufacturer's technical literature or relevant Australian Standards. Siniat technical information is regularly updated. To ensure this document is current with the latest information, visit [siniat.solutions](http://siniat.solutions)

**Siniat.solutions provides a host of online solutions for your product**

#### **siniat SELECT®**

offers an online system selector and custom design specification proposal, developed by us and catered to your project's requirements.

#### **siniat CALCULATE®**

is a range of online calculation tools for the professional. Explore [siniat.solutions](http://siniat.solutions) on [siniat.com.au](http://siniat.com.au).



**Etex Australia Pty Ltd**

ABN 61 003 621 010  
31 Military Road, Matraville  
NSW 2036

**[siniat.com.au](http://siniat.com.au)**



#### warranty

Siniat's products are guaranteed by a 10 Year Warranty. For details visit [siniat.com.au](http://siniat.com.au)

technical advice  
**AU 1300 724 505**