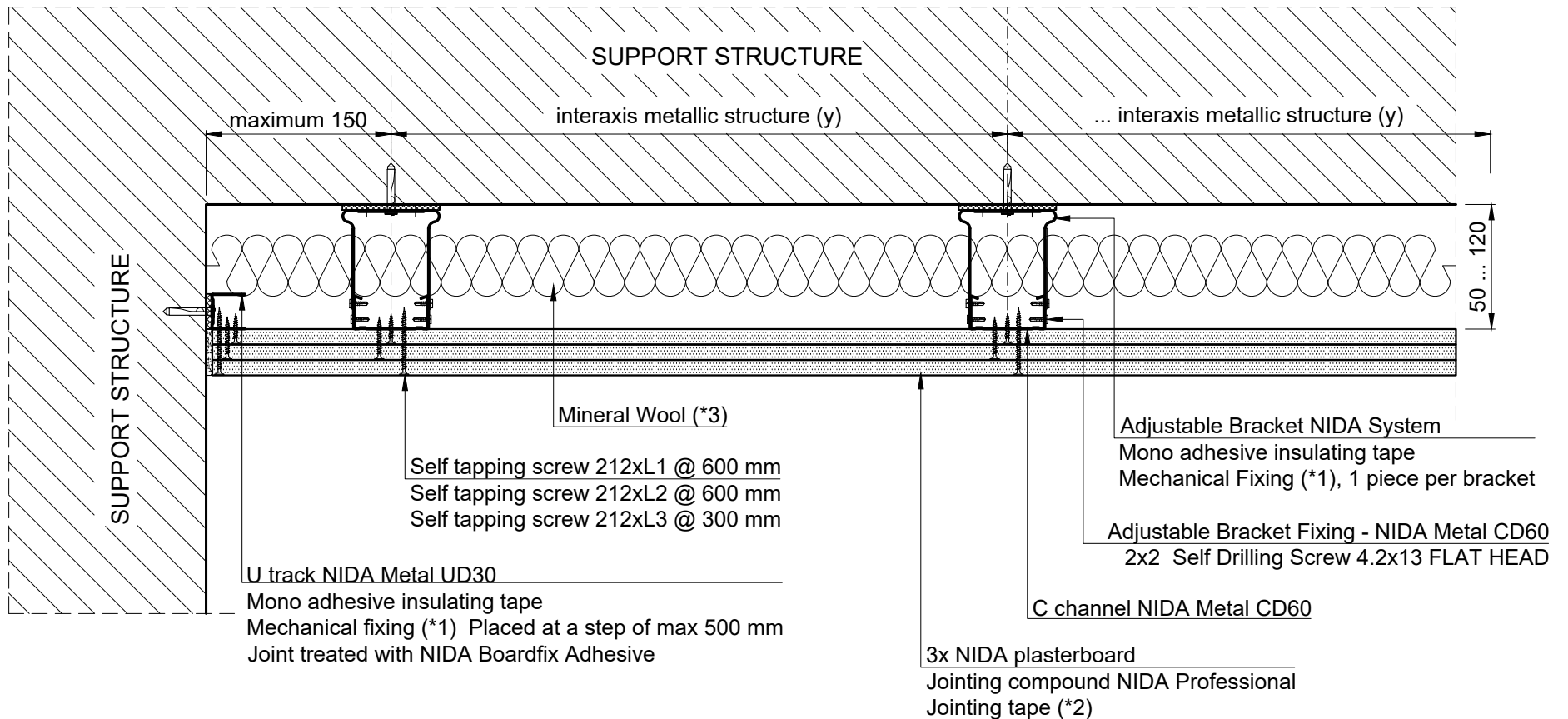


NIDA System Ceiling triple lining
Simple frame with Adjustable Bracket
Rigid fixing with massive element
Cross Section



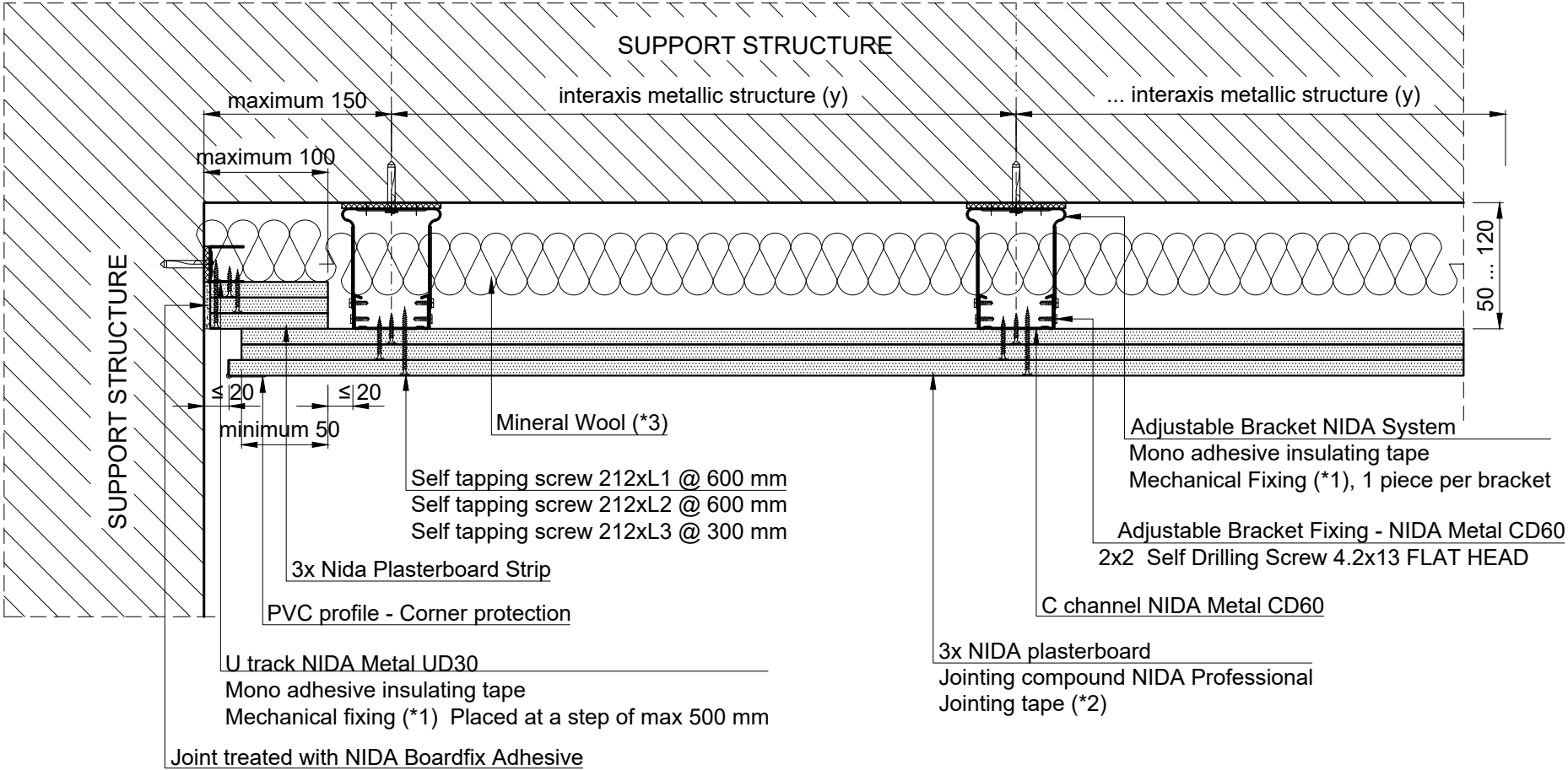
The technical details presented in this documentation represent System Type details, their adaptation to the project will be done by the specialised designer of the building in collaboration with the SINIAT technical department.

NIDA System P

Chapter title: NIDA System Ceiling triple lining. Simple frame with Adjustable Bracket			
Subchapter title: Rigid fixing with massive elements. Cross Section			
Drawing no: P3.S1.Br.001	Edition no: 1	Scale: 1:5	Date: 2019



NIDA System Ceiling triple lining
Simple frame with Adjustable Bracket
Sliding fixing with massive elements
Cross Section



The technical details presented in this documentation represent System Type details, their adaptation to the project will be done by the specialised designer of the building in collaboration with the SINIAT technical department.

NIDA System P

Chapter title: NIDA System Ceiling triple lining. Simple frame with Adjustable Bracket			
Subchapter title: Sliding fixing with massive elements. Cross Section			
Drawing no: P3.S1.Br.002	Edition no: 1	Scale: 1:5	Date: 2019



SUPPORT STRUCTURE

maximum 200

interaxis Adjustable Bracket (R)

50 ... 120

SUPPORT STRUCTURE

Mineral Wool (*3)

U track NIDA Metal UD30

Mono adhesive insulating tape

Mechanical fixing (*1) Placed at a step of max 500 mm

Joint treated with NIDA Boardfix Adhesive

Self tapping screw 212xL1 @ 600 mm

Self tapping screw 212xL2 @ 600 mm

Self tapping screw 212xL3 @ 300 mm

C channel NIDA Metal CD60

Adjustable Bracket NIDA System

Mono adhesive insulating tape

Mechanical Fixing (*1), 1 piece per bracket

3x NIDA plasterboard

Jointing compound NIDA Professional

Jointing tape (*2)

Adjustable Bracket Fixing - NIDA Metal CD60

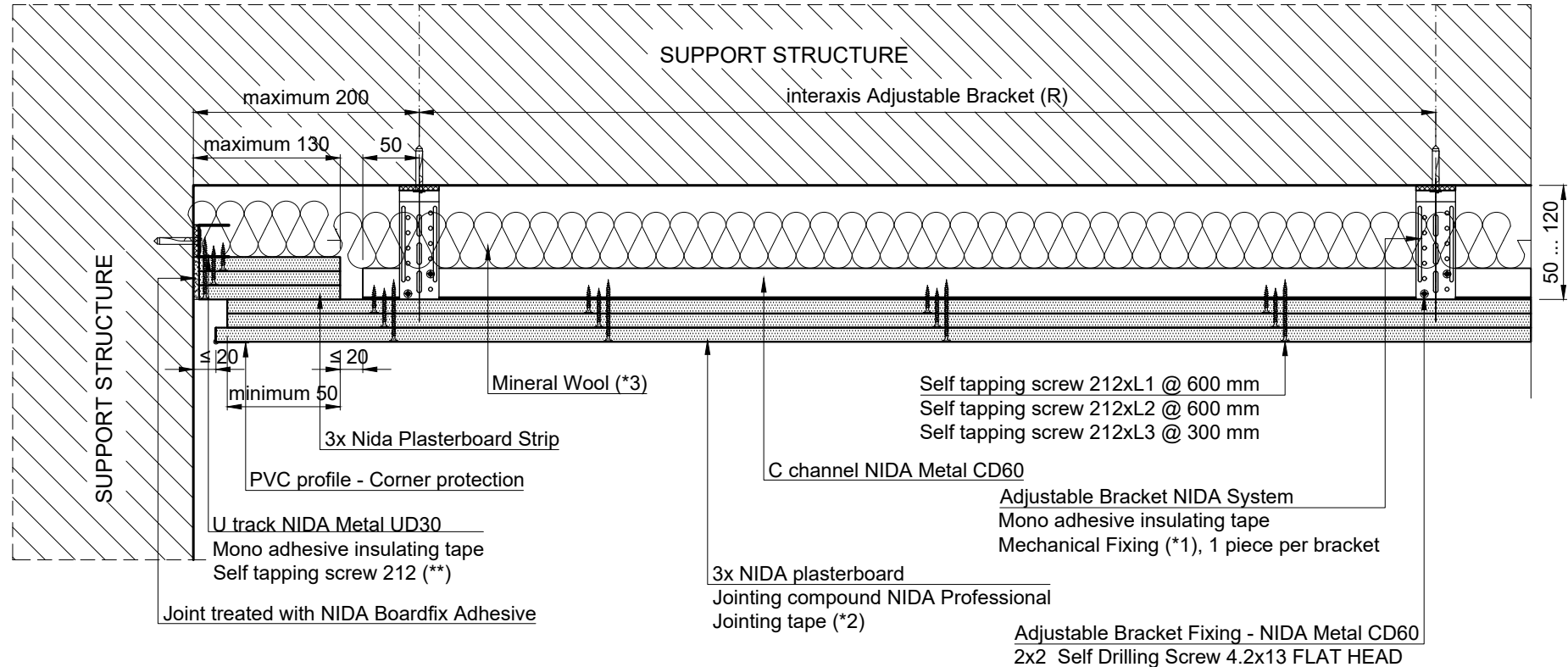
2x2 Self Drilling Screw 4.2x13 FLAT HEAD

NIDA System P

Drawing no:	Edition no:	Scale:	Date:
P3.S1.Br.003	1	1:5	2019



NIDA System Ceiling triple linning
Simple frame with Adjustable Bracket
Sliding fixing with massive elements
Longitudinal Section



The technical details presented in this documentation represent System Type details, their adaptation to the project will be done by the specialised designer of the building in collaboration with the SINIAT technical department.

NIDA System P

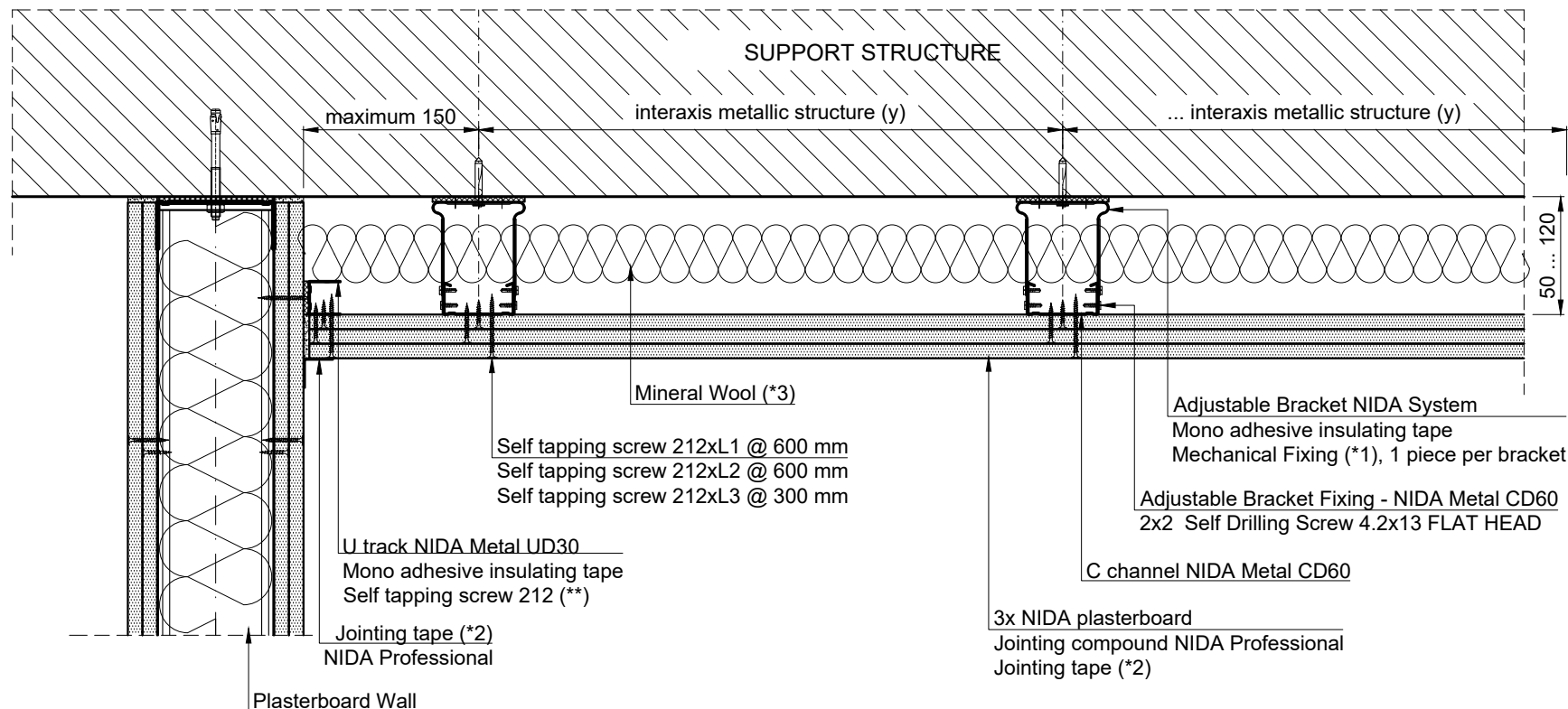
Chapter title:
NIDA System Ceiling triple linning. Simple frame with Adjustable Bracket

Subchapter title:
Sliding fixing with massive elements. Longitudinal Section

Drawing no:	Edition no:	Scale:	Date:
P3.S1.Br.004	1	1:5	2019



NIDA System Ceiling triple lining
Simple frame with Adjustable Bracket
Intersection with Plasterboard Wall Partition
Cross Section



NOTE:

(**) The self tapping screw shall be fixed on the metal structure of the Plasterboard Wall, the lenght of the screw will be according to the thikness of the fixing package (Wall boards thikness of layers)

The technical details presented in this documentation represent System Type details, their adaptation to the project will be done by the specialised designer of the building in collaboration with the SINIAT technical department.

NIDA System P

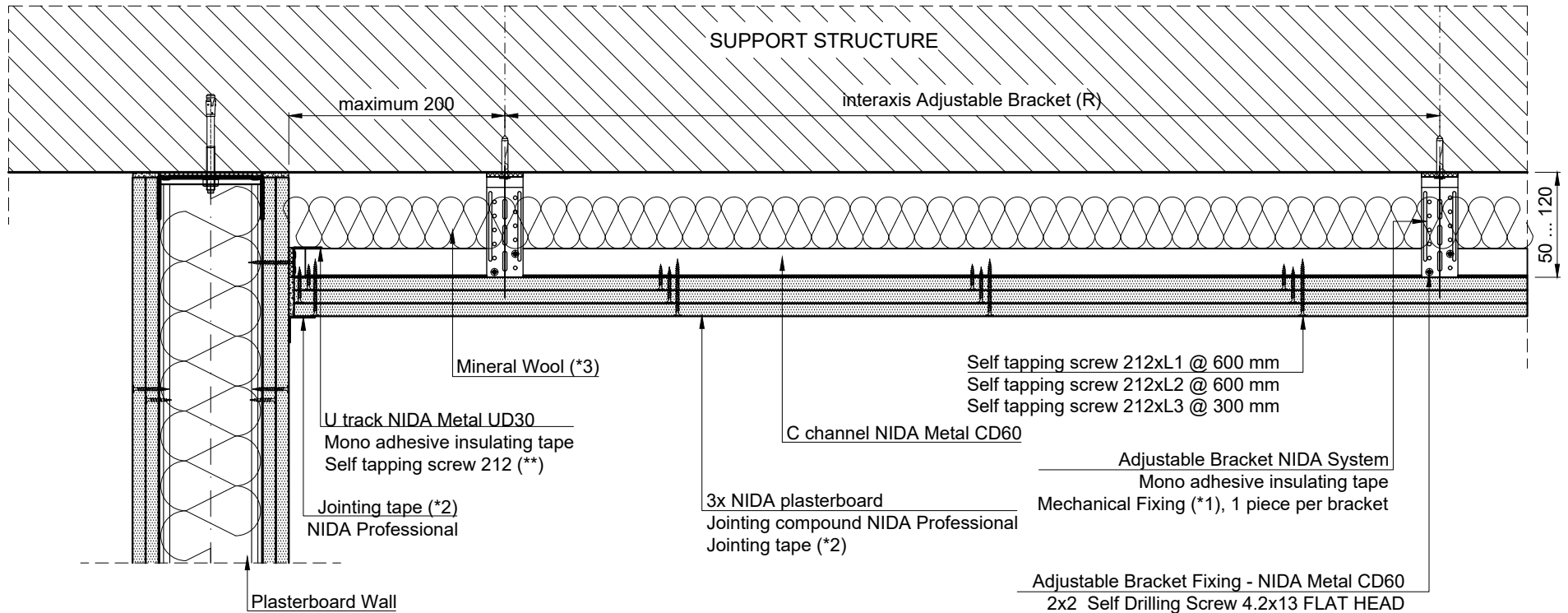
Chapter title:
NIDA System Ceiling triple lining. Simple frame with Adjustable Bracket

Subchapter title:
Intersection with Plasterboard Wall Partition. Cross Section

Drawing no:	Edition no:	Scale:	Date:
P3.S1.Br.005	1	1:5	2019



NIDA System Ceiling triple lining
Simple frame with Adjustable Bracket
Intersection with Dry Wall Partition
Longitudinal Section



NOTE:

(**) The self tapping screw shall be fixed on the metal structure of the Plasterboard Wall, the lenght of the screw will be according to the thikness of the fixing package (Wall boards thikness of layers)

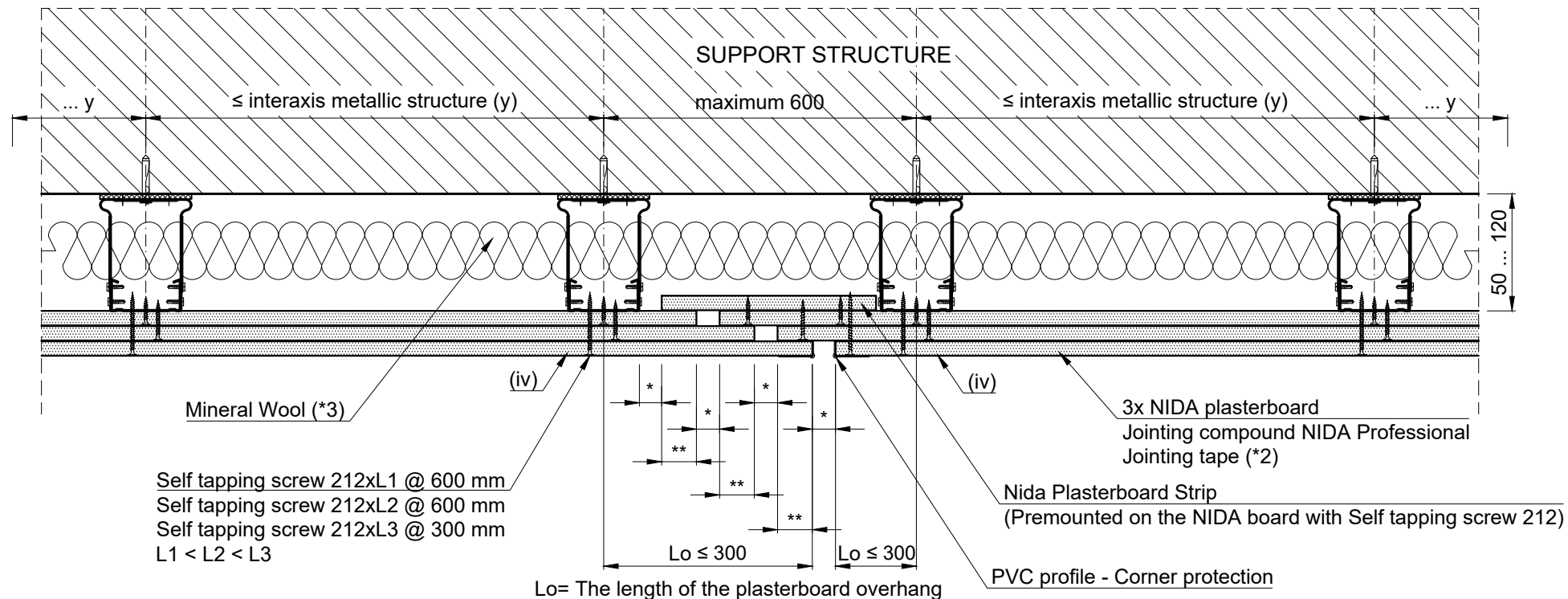
The technical details presented in this documentation represent System Type details, their adaptation to the project will be done by the specialised designer of the building in collaboration with the SINIAT technical department.

NIDA System P

Chapter title: NIDA System Ceiling triple lining. Simple frame with Adjustable Bracket			
Subchapter title: Intersection with Plasterboard Wall Partition. Longitudinal section			
Drawing no: P3.S1.Br.006	Edition no: 1	Scale: 1:5	Date: 2019



NIDA System Ceiling triple lining
Simple frame with Adjustable Bracket
Expansion joint
Cross Section



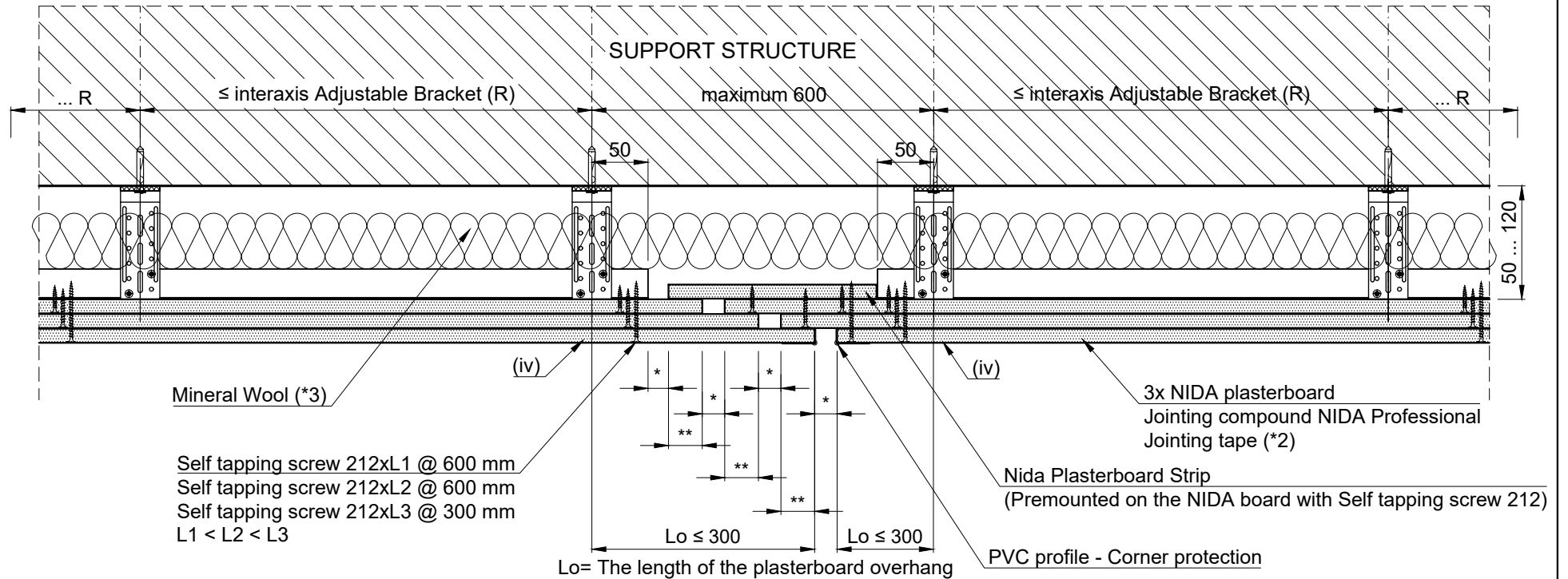
- NOTE:
- (iv) For the last row of plasterboards joints shall not be made in the indicated area;
The joint shall also be placed right to the structural joints;
 - * The size of the joint's gap will be established considering the size of the structural joint's gap but not less than 20 mm;
 - ** Boards overlap shall have a value of minimum (* + 10 mm)

The technical details presented in this documentation represent System Type details, their adaptation to the project will be done by the specialised designer of the building in collaboration with the SINIAT technical department.

NIDA System P			
Chapter title: NIDA System Ceiling triple lining. Simple frame with Adjustable Bracket			
Subchapter title: Expansion joint. Cross Section			
Drawing no: P3.S1.Br.007	Edition no: 1	Scale: 1:5	Date: 2019



NIDA System Ceiling triple lining
Simple frame with Adjustable Bracket
Expansion joint
Longitudinal Section



NOTE:

- (iv) For the last row of plasterboards joints shall not be made in the indicated area;
The joint shall also be placed right to the structural joints;
* The size of the joint's gap will be established considering the size of the structural joint's gap but not less than 20 mm;
** Boards overlap shall have a value of minimum (* + 10 mm)

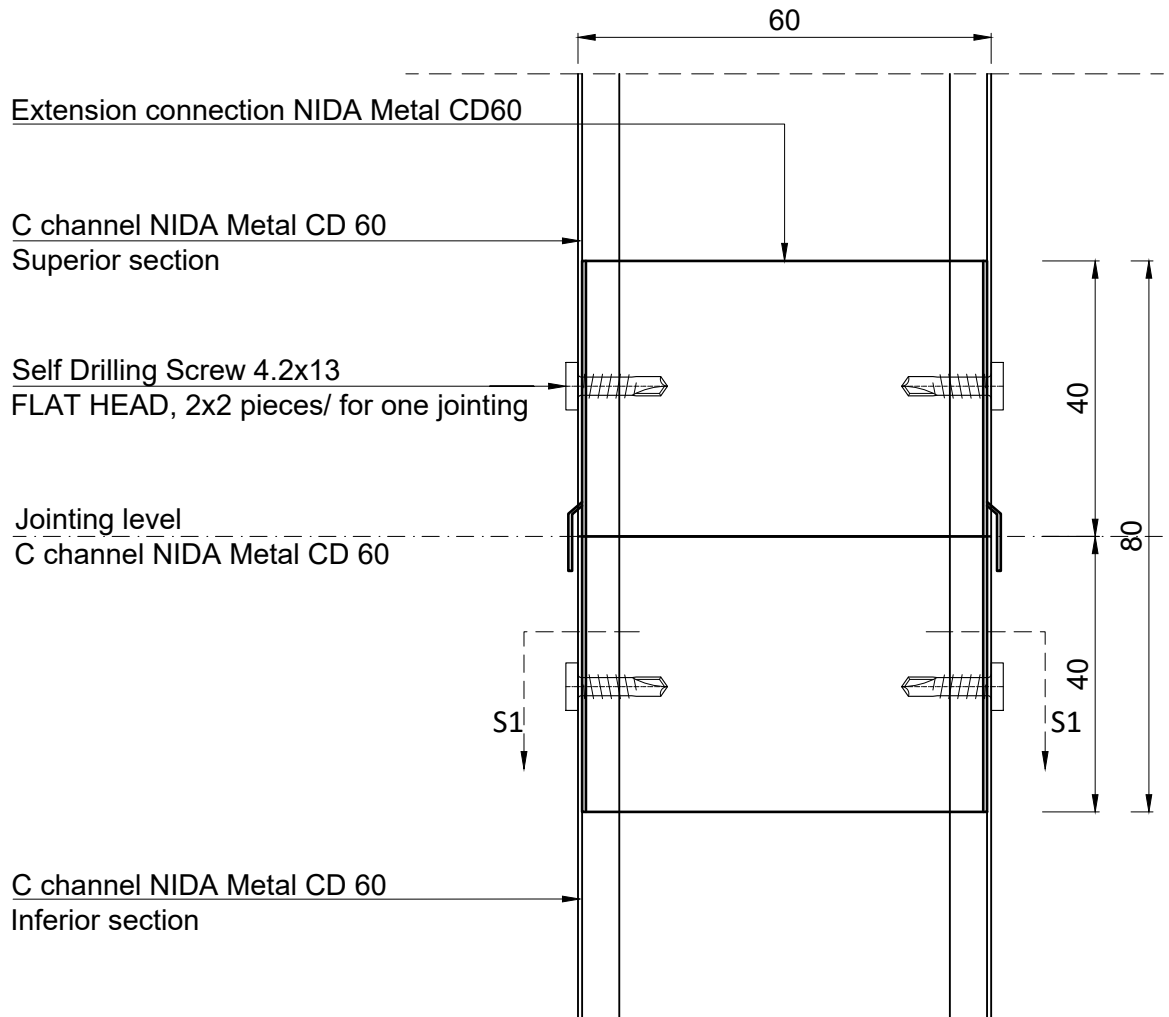
The technical details presented in this documentation represent System Type details, their adaptation to the project will be done by the specialised designer of the building in collaboration with the SINIAT technical department.

NIDA System P

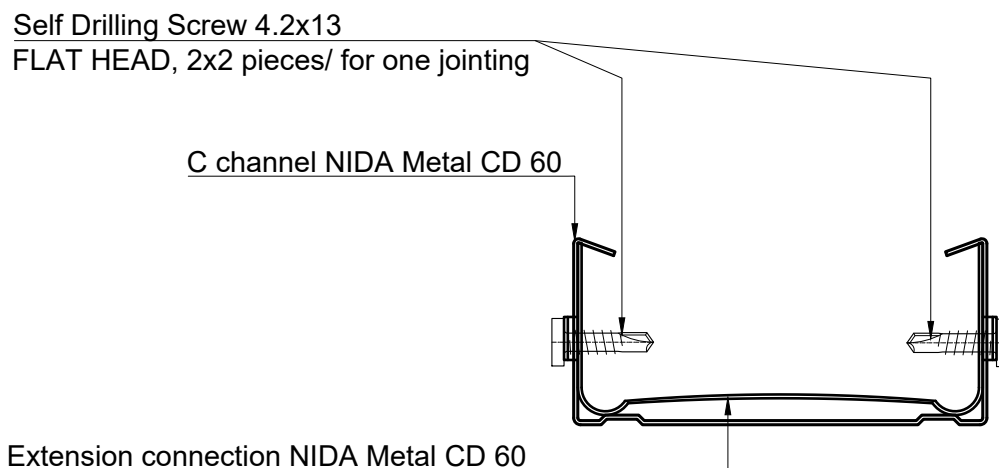
Chapter title: NIDA System Ceiling triple lining. Simple frame with Adjustable Bracket			
Subchapter title: Expansion joint. Longitudinal Section			
Drawing no: P3.S1.Br.008	Edition no: 1	Scale: 1:5	Date: 2019



Jointing Detail NIDA Metal CD60 Profile



Section S1-S1



The technical details presented in this documentation represent System Type details, their adaptation to the project will be done by the specialised designer of the building in collaboration with the SINIAT technical department.

NIDA System P

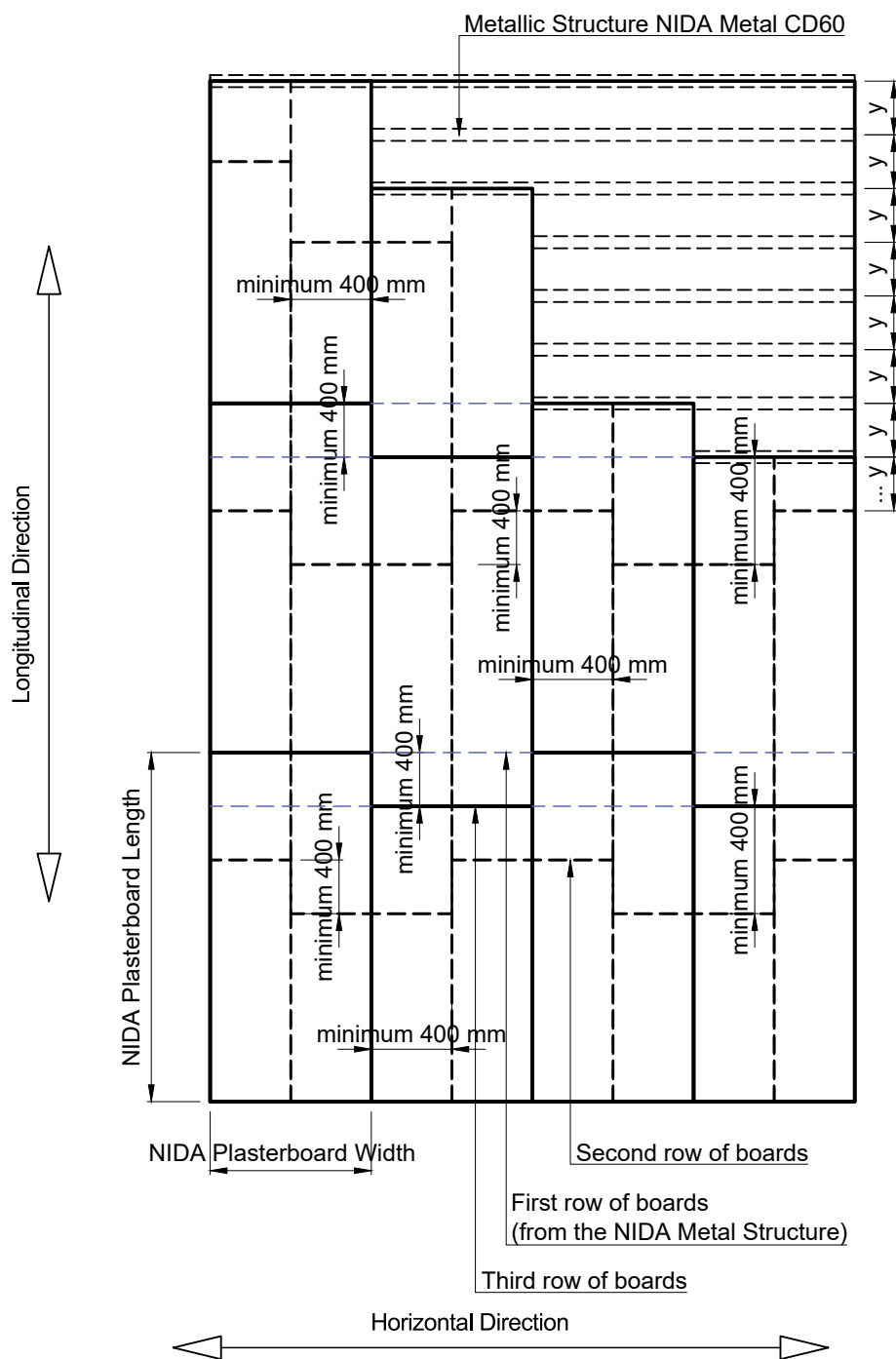
Chapter title:
NIDA System Ceiling triple lining. Simple frame with Adjustable Bracket

Subchapter title:
Jointing Detail NIDA Metal CD60 Profile

Drawing no: P3.S1.Br.009	Edition no: 1	Scale: 1:5	Date: 2019
-----------------------------	------------------	---------------	---------------



Boards staggering System elevation



Boards are fixed perpendicular on Nida Metal CD60 profiles.
Boards staggering on longitudinal direction is minimum 400 mm.

The technical details presented in this documentation represent System Type details, their adaptation to the project will be done by the specialised designer of the building in collaboration with the SINIAT technical department.

NIDA System P

Chapter title:
NIDA System Ceiling triple lining. Simple frame with Adjustable Bracket

Subchapter title:
Boards staggering. System elevation

Drawing no:	Edition no:	Scale:	Date:
P3.S1.Br.010	1	1:5	2019

