



Weather Defence®

rigid air barrier board

Disclaimer

Products manufactured and systems designed by Etex Australia Pty Ltd and branded Siniat, are produced in accordance with the Building Code of Australia and relevant Australian Standards. Information in this document is to be used as a guide only and is subject to project approval as many aspects of construction are not comprehensively covered. It is the responsibility of the project to determine if our products and systems are suitable for the intended application and they meet the relevant building code and project requirements. It is also the projects responsibility to ensure third party products have the appropriate certification with Siniat products and systems. Etex Australia Pty Ltd will not be held responsible for any claims resulting from the installation of its products or other associated products not in accordance with the recommendations of the manufacturer's technical literature or relevant Australian Standards, or for situations not covered by our certification reports.

Siniat technical information is regularly updated. To ensure this document is current with the latest information, visit:

www.siniat.com.au

or contact Siniat's Customer Service Centre on

1300 724 505

Warranty

Siniat products are covered by the comprehensive 10 year Siniat Warranty.

Visit

www.siniat.com.au/warranty

Version 13
September 2025



about us

Siniat by Etex is a leading global manufacturer and supplier of interior and exterior materials for drywall construction.

In Australia, Etex has Siniat manufacturing facilities located in Sydney, Melbourne, Bundaberg, Brisbane and Perth. Etex supplies Siniat branded plasterboard, compounds, cornice, steel profiles and associated products and systems to the Australian building industry through its national distribution network.

Siniat's comprehensive range of quality wall and ceiling lining products are developed with specific characteristics to enhance performance and provide fire, water, acoustic and decorative solutions to all construction projects.

The Siniat team is committed to providing excellent technical service and sales support to help with innovative solutions for your next project.

Other Etex brands in ANZ are Equitone for durable and aesthetic facades, Innova for a range of fibre cement solutions and Promat, the experts in passive fire protection.

contents

1 introduction	4
2 applications	5
3 components	5
joint sealing tapes	6
4 fire resistance	7
5 case studies	9

product properties



Water Resistant



Fire Resistant



Sound Resistant



Mould Resistant



Weather Resistant



Vapour Permeable



Improves Airtightness



introduction

Siniat **Weather Defence®** is a rigid air barrier which is used behind facade cladding systems to create a pressure equalised cavity. It has transformed building envelope construction and performance.

The design benefits it brings include:

- Weather Defence may be used wherever a non-combustible material is required by the National Construction Code (NCC).
- Weather Defence is classified as vapour permeable Class 4 and is recommended for use in all Climate Zones. In Climate Zone 1, it is recommended to apply a vapour control layer over the external surface.
- Can improve building airtightness
- When used in a system, Weather Defence can provide an FRL (Fire Resistance Level) of up to -/120/120 or 90/90/90 when required by the Building Code of Australia
- Easy to cut and shape, offering more options for design detailing
- Encloses the building faster so the interior fitout can start sooner, whatever the weather.
- Simply score and snap, no need for specialist cutting equipment or segregated areas
- Weather Defence is water, weather and mould resistant and can be left exposed on frame for up to 12 months.
- Suitable for use in all ventilated facades with any cladding material

Innovative technology

External sheathing board options have evolved. Weather Defence is a rigid air barrier that is BCA compliant for non-combustible facades; a great alternative to cement based sheathing boards. Its excellent vapour permeability means it is suitable for cold climates, or for accelerating construction by enclosing the building early.

Weather Defence installations can achieve airtightness targets that contribute to a building's energy efficiency and allow any glasswool insulation in the cavity to perform as intended by avoiding wind washing.

It has a fully recyclable gypsum core that is low in embodied carbon and that produces no silica dust during installation.



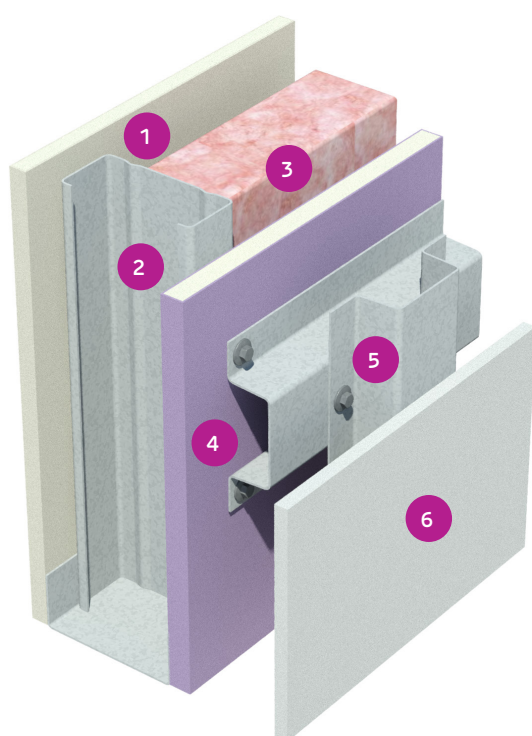
applications

Weather Defence® is designed to be installed on residential, multi-residential, commercial, office, healthcare, education and public buildings. Typically, Weather Defence is installed on:


- Lightweight steel stud framing
- Timber stud framing, and
- Modular buildings.

Another application where Weather Defence can provide excellent protection in the event of a fire is in the construction (Building Classes 1,2,3,10 attached decks and some Class 9 buildings) in bushfire zones. A full house wrap with Weather Defence of roof, walls and eaves has been certified to AS1530.8.2 for use in the Flame Zone (FZ) according to AS 3959 Construction of buildings in bushfire-prone areas (Class 1,2,3 and 10 requirements).

components



- 1 Internal wall lining
- 2 Steel framing
- 3 Insulation
- 4 **Weather Defence** rigid air barrier
- 5 Cladding support framing system
- 6 Cladding such as Equitone or Innova solutions

Name	Thickness (mm)	Width (mm)	Length (mm)	Weight (kg/m ²)	Properties
Weather Defence®	13	1200	2400	11.7	

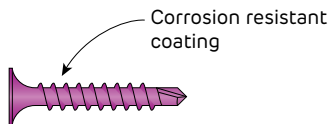


FIGURE 1 6g x 38mm Weather Defence® Screw
Fine thread drill point screw for steel

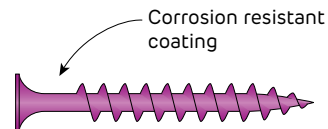


FIGURE 2 6g x 42mm Weather Defence® Screw
Coarse thread needle point screw for timber

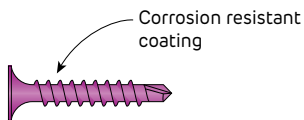


FIGURE 3 6g x 25mm Weather Defence® Screw
Collated fine thread drill point screw for steel

joint sealing tapes



FIGURE 4 Pro Clima Tescon Extora®
Flashing Tape - (Supplied by Pro Clima)



FIGURE 5 Pro Clima Tescon Extoseal®
Sill Tape - (Supplied by Pro Clima)



FIGURE 6 Pro Clima Tescon®WS
Wet Seal Connection Tape - (Supplied by Pro Clima)



Using Weather Defence® when fire resistance is required

Weather Defence can be used in various applications where fire resistance is a requirement, and is certified for use in various fire rated systems where an FRL is required.

Weather Defence is certified for use in the following situations and applications that require fire resistance:

External fire spread

In the wake of several tragic building fires around the world, including the Grenfell Tower fire in London (2017) and the Lacrosse Tower fire in Melbourne (2014), combustible facade systems have become a pressing topic for building professionals.

In the event of a fire, a combustible facade can act as a fuel source, allowing flames to rapidly travel up the exterior of the building, often bypassing internal fire stops and containment systems. Weather Defence can be used as part of a non-combustible facade system.



Fire rated external wall systems

Siniat has conducted fire tests on a range of wall systems and certified their fire-rating. When used in a system, Weather Defence can provide an FRL (Fire Resistance Level) of up to -/120/120 or 90/90/90 when required by the Building Code of Australia.

Fire-rated systems incorporating Weather Defence are described in the Siniat technical manual Blueprint.

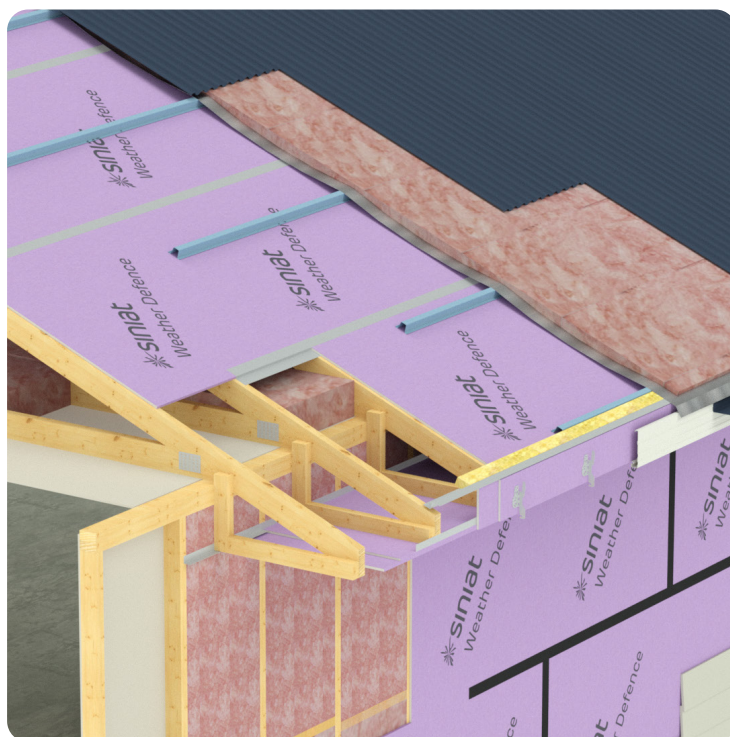
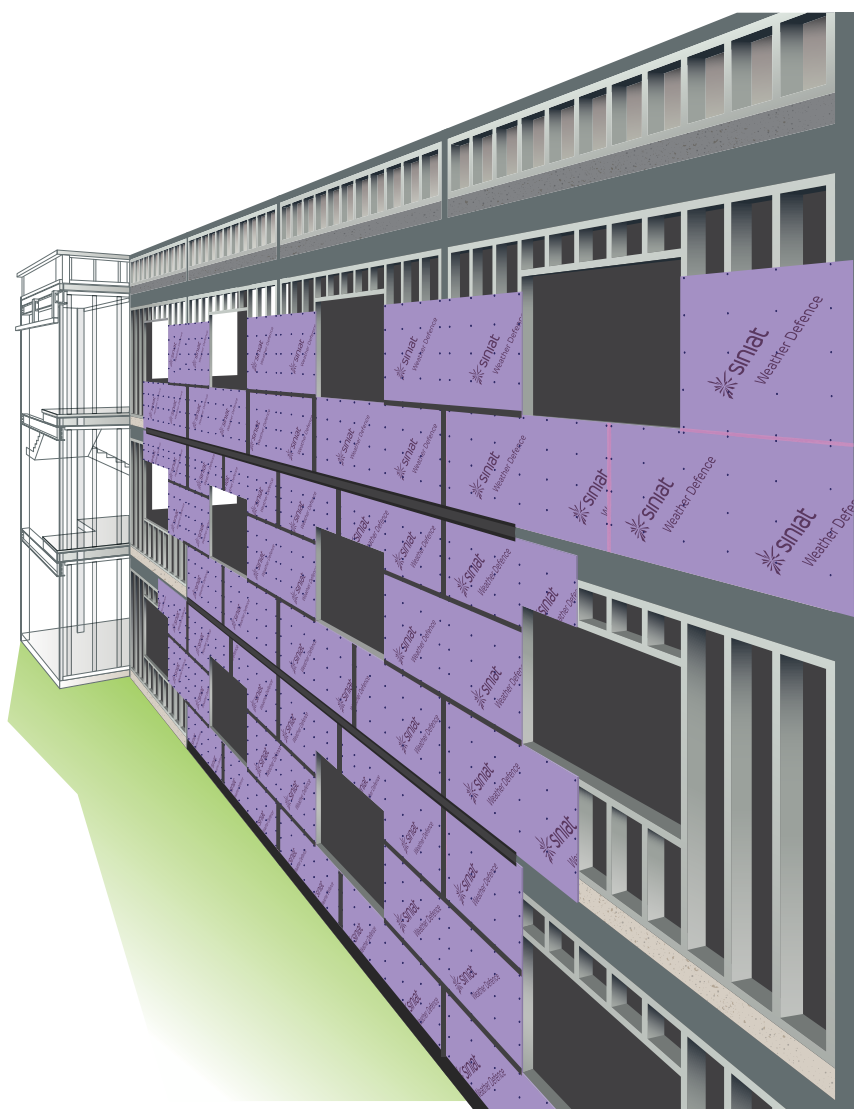
External walls, eaves and roofs in bushfire zones

Another application where Weather Defence can provide excellent fire protection is in the construction of residential buildings (Building Classes 1-3) in bushfire zones. Weather Defence can be used to wrap the entire building including the walls, roof and eaves to protect the occupants and contents during a bushfire.

Weather Defence has been assessed for use on timber and metal frames, and for both metal and tiled roofs. It can also be used on external ceilings in balconies and alfresco areas.

When using Weather Defence in this application, it can provide extra protection against an ember attack. An ember attack is when smoldering fragments of solid fuel are swept forward of the fire front. They can ignite fires by entering houses as well as wall and roof cavities. Embers can travel large distances and are the main cause of houses lost to bushfires.

Because Weather Defence can improve the weathertightness of a building, it has the added benefit of restricting smoke and dangerous gases from entering the structure.



case studies

Park Sydney, Erskineville



The site requirement for Park Sydney was for a rigid weather barrier for use behind ventilated rainscreen constructed of compressed fibre cement and aluminium cladding that was capable of withstanding higher wind loading.

Due to the building not being sprinkler protected, all external walls were required to have an FRL not less than -/60/60. This was easily achieved using 13mm **Weather Defence** board and fire-resistant internal plasterboard. Further to this, the use of rigid board provided increased acoustic performance over pliable sarking membranes, whilst still being highly vapour permeable to control interstitial condensation risks.

This project incorporated over 10,000m² of Weather Defence, and was one of the first major projects in Australia Weather Defence was supplied to.



Brookvale Public School, Sydney



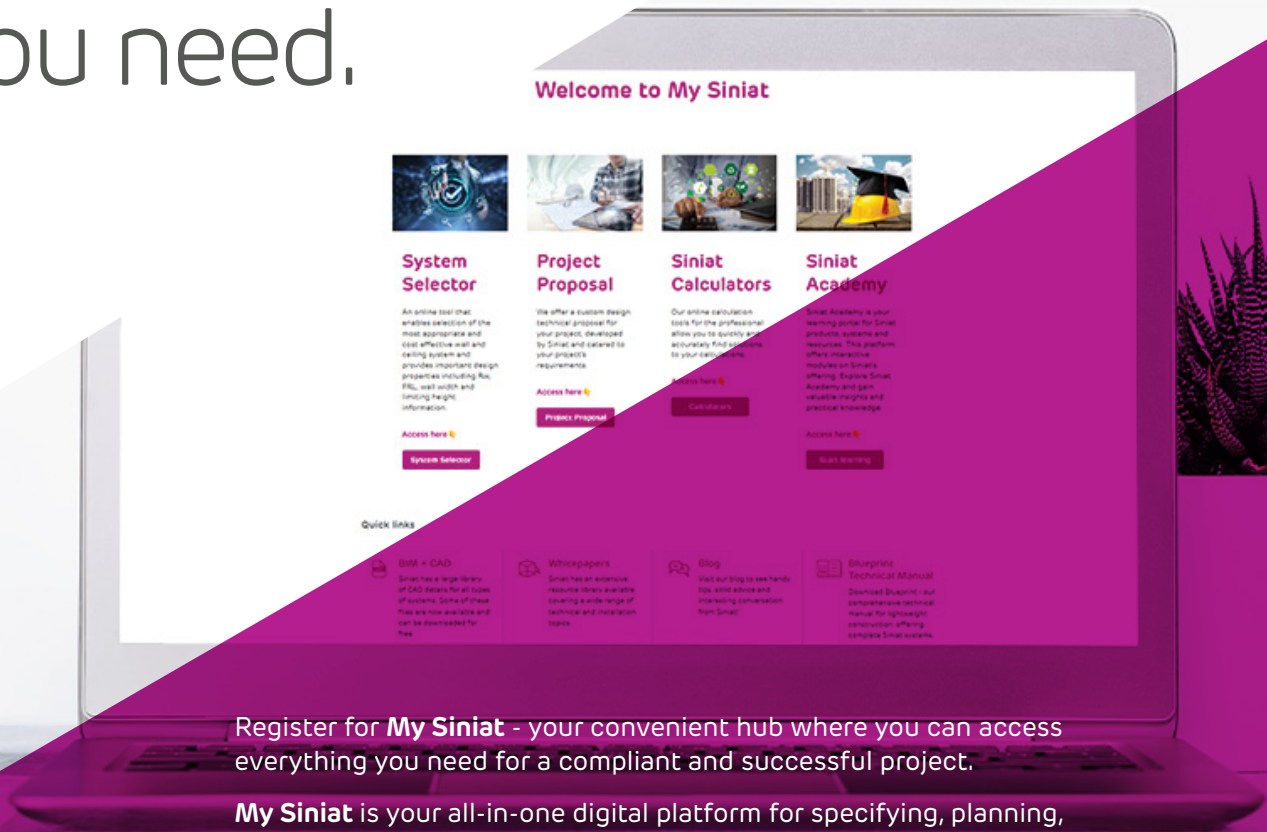
Weather Defence was used in conjunction with a rainscreen facade system from EQUITONE.

Weather Defence provides a robust weather resistive layer to prevent moisture ingress and excessive air leakage of a building, whilst managing condensation risk by being highly vapour-permeable.

Onsite teams were impressed by the performance of Weather Defence during periods of heavy rain. It allowed the interior to stay dry, enabling internal trades to keep working. This would not have been possible without the installation of Weather Defence early on in the build.



One login.
One hub.
One space for
everything
you need.



Register for **My Siniat** - your convenient hub where you can access everything you need for a compliant and successful project.

My Siniat is your all-in-one digital platform for specifying, planning, and managing your Siniat wall and ceiling systems.

By registering for this platform, you will gain exclusive access to technical content, including System Selector, Project Proposal and our BIM and CAD Library. You will also have easy access to our virtual library of whitepapers and blogs.

One of the most exciting features of **My Siniat** is the Siniat Academy, available exclusively through **My Siniat**. It is a valuable training portal to learn more about our products and their applications. Courses are delivered in a fun and interactive way and a certificate of completion is provided at the end of each course. Enrich your knowledge and expertise with us!

Register for My Siniat by scanning the QR code and complete the form. Your request will be reviewed within 48 hours. Once approved you will receive an email with instructions to setting up your account.





Etex Australia Pty Ltd
ABN 61 003 621 010

31 Military Road
Matraville NSW 2036

siniat.com.au

warranty

Siniat's products are guaranteed
by a comprehensive warranty.
For details visit siniat.com.au

customer service and
technical advice

AU 1300 724 505